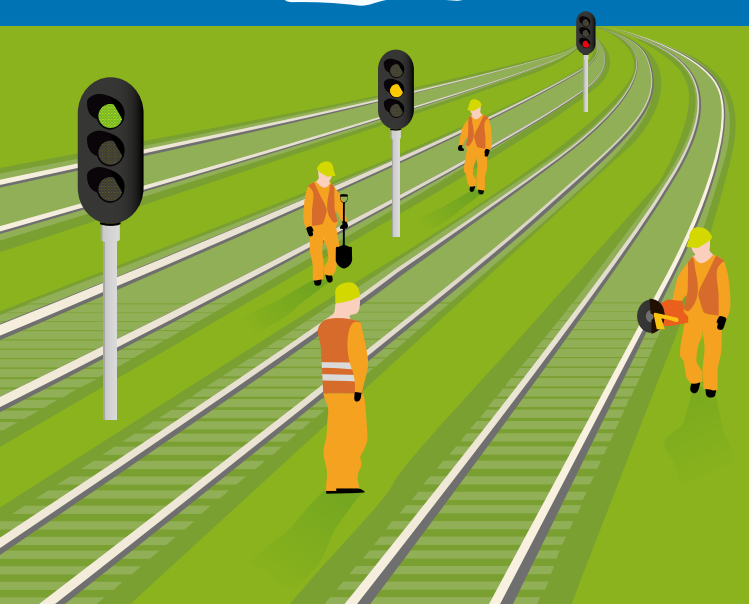


August 2014
London Euston line

don't get caught out this Summer

improvement works
on the London Euston line
throughout
August 2014



what's happening?

The line to and from London Euston will be closed for three weekends in August to allow Network Rail to carry out improvement works.

Network Rail owns and maintains the rail infrastructure in Great Britain; these works form part of its £81m improvement plan to replace 12 miles of track, signalling equipment and overhead power lines in the Watford area. This will give passengers a more reliable and robust railway between Milton Keynes and London Euston.

when's it happening?

There is a series of scheduled weekend closures in 2014 and 2015. The first closure took place in May 2014, when improvements were made to track and signalling equipment, plus preparatory work was done in readiness for the August closures.

the dates of the closures are

2014

Saturday 9 August - Monday 11 August

Saturday 16 August - Monday 18 August

Saturday 23 August - Tuesday 26 August

Wednesday 24 December - Monday 29 December

2015

Saturday 14 February - Monday 16 February

Saturday 21 February - Monday 23 February

Friday 3 April - Tuesday 7 April

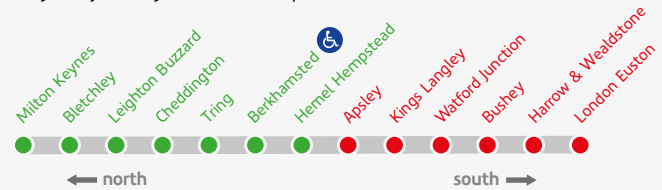
August closure dates

9 Sat	LINE CLOSED
10 Sun	LINE CLOSED
11 Mon	REDUCED SERVICE
12 Tue	NORMAL SERVICE
16 Sat	LINE CLOSED
17 Sun	LINE CLOSED
18 Mon	REDUCED SERVICE
19 Tue	NORMAL SERVICE
23 Sat	LINE CLOSED
24 Sun	LINE CLOSED
25 Mon	LINE CLOSED
26 Tue	NORMAL SERVICE

closing the line

The work cannot be carried out while trains are running, so Network Rail needs to close part of the railway.

During the August closures, the line will be closed between Hemel Hempstead and London Euston. So, if you're travelling between these two stations, your journey will be disrupted.



We know that this will affect many people's travel plans and we thank you in advance for your patience.

improving your journey

Benefits for you when the works are complete:

✓ a more punctual train service

✓ modern and reliable infrastructure

✓ future increased line speeds



August
weekend closures
Sat 9 – Mon 11
Sat 16 – Mon 18
Sat 23 – Tue 26

This is your guide to travelling to and from London during the August closures.

It's worth double-checking nationalrail.co.uk/watford before you travel for any last minute changes.

can I travel with another train operator?

If you have to travel by train during these periods, we advise you to use alternative train companies where possible. This will make your journey quicker and easier. If you already have a valid London Midland ticket, we have arranged for your ticket to be valid on [Chiltern Railways](#), [First Capital Connect](#), [East Midlands Trains](#), [London Overground](#) and [London Underground](#) services.

Below is a list of alternative stations for you to consider using during the closures.

your local London Midland station	alternative station into St Pancras	alternative station into Baker St or Marylebone
Birmingham New St	—	Birmingham Moor Street
Coventry, Rugby	Kettering	Warwick Parkway, Leamington Spa
Northampton, Long Buckby, Wolverton	Wellingborough	Banbury, Bicester North
Milton Keynes	Bedford, Luton	Bicester North, Aylesbury
Bletchley	Bedford, Luton Airport Parkway	Bicester North, Aylesbury
Leighton Buzzard	Luton, Luton Airport Parkway	Aylesbury
Cheddington, Tring	St Albans City	Wendover
Berkhamsted	St Albans City	Chesham, Amersham*
Hemel Hempstead, Apsley	St Albans City	Chesham, Amersham*
Watford Junction, Kings Langley	Elstree & Borehamwood, Radlett	Watford (Metropolitan line)

*Chesham & Amersham stations are out of use between 23–26 Aug, see page 12

what ticket do I need?

If you have a valid train ticket marked London Terminals, you can enter or exit the Underground or Overground at the following stations:

Watford (Metropolitan line)	Harrow & Wealdstone
Watford Junction	Bushey
Amersham	Euston
Chesham	Euston Square
High Barnet	Kings Cross
Edgware	St Pancras
Stanmore	Marylebone

If you enter or exit any other station, you will need a valid Travelcard or Oyster pay-as-you-go for onward travel as normal.

additional closures on the rail network

9-11 August

London Overground services will not be running on Sunday 10 August.

16-18 August

On Sunday 17 August, replacement buses will be running between Finchley Road and Baker Street on the Jubilee line.

23-26 August

- On Saturday 23, Sunday 24 and Bank Holiday Monday 25 August, there are improvement works taking place between Chesham/Amersham and Moor Park. Replacement buses will be running between Chesham and Northwood. Travel from Watford Underground Station will not be affected.
- Chiltern Railways services will not operate between Great Missenden and Marylebone.
- On Saturday 23, Sunday 24 and Bank Holiday Monday 25 August, replacement buses will be running between Edgware and Hampsted.

Check tfl.gov.uk before you travel for full details of planned improvement works on the London Underground or London Overground that may affect your journey around London.

travelling with London Midland

If you can't reach your destination with another train company, please use the following pages to plan your journey with London Midland.

Two of the August closures are not on bank holiday weekends (Sat 9 – Mon 11 Aug and Sat 16 – Mon 18 Aug).

On Monday 11 and Monday 18, there will be a significantly reduced train timetable in operation.

As a result, London Midland will not have the capacity to carry a large number of passengers. Therefore, if you are travelling on the Euston line on those days, you may wish to consider making alternative work or travel arrangements.

We'd like to thank you in advance for your cooperation, and patience.



9 – 11 August weekend

what to expect if you do travel with us

- Travelling south, London Midland trains will only run as far as Hemel Hempstead. There will be alternative road transport approximately every 30 minutes between Hemel Hempstead and Stanmore Underground Station, via Apsley, Kings Langley and Watford Junction. At Stanmore, connect on to the Jubilee line for central London.
- Passengers requiring wheelchair access should change at Berkhamsted, as Hemel Hempstead does not have step-free access.
- Alternative road transport will operate between Watford Junction and St Albans City train stations between 9 -26 August.

Monday

- London Midland will operate a significantly reduced train timetable between Northampton and London Euston for the entire day; please make alternative work or travel arrangements if possible. Check nationalrail.co.uk before you travel for any last minute changes.
- 🚇 London Overground services **will not be running on Sunday 10 August**, but will run from Watford Junction as normal on Saturday 9 and Monday 11 August.
- 🚇 London Underground services from Watford (Metropolitan line) will run all weekend as normal.

Please note that you must have a valid ticket purchased before travel to use replacement road transport.



16 – 18 August weekend

what to expect if you do travel with us

- Travelling south, London Midland trains will only run as far as Hemel Hempstead. There will be alternative road transport approximately every 30 minutes between Hemel Hempstead and Stanmore Underground Station, via Apsley, Kings Langley and Watford Junction. At Stanmore, connect on to the Jubilee line for central London.
- Passengers requiring wheelchair access should change at Berkhamsted, as Hemel Hempstead does not have step-free access.
- Alternative road transport will operate between Watford Junction and St Albans City train stations between 9 -26 August.

Monday

- London Midland will operate a significantly reduced train timetable between Northampton and London Euston for the entire day; please make alternative work or travel arrangements if possible. Check nationalrail.co.uk before you travel for any last minute changes.
- 🚶 London Overground will run between Watford Junction and London Euston all weekend as normal.
- 🚶 London Underground services from Watford (Metropolitan line) will run all weekend as normal.

Please note that you must have a valid ticket purchased before travel to use replacement road transport.



23 – 26 August weekend

Saturday

- Travelling south, London Midland trains will only run as far as Hemel Hempstead. There will be alternative road transport approximately every 30 minutes between Hemel Hempstead and Stanmore Underground Station, via Apsley, Kings Langley and Watford Junction. At Stanmore, connect on to the Jubilee line for central London.
- Passengers requiring wheelchair access should change at Berkhamsted, as Hemel Hempstead does not have step-free access.

Sunday

- Travelling south, London Midland trains will only run as far as Milton Keynes. There will be alternative road transport approximately every 30 minutes between Milton Keynes and Stanmore Underground Station (for connection to the Jubilee line into central London).

Bank Holiday Monday

- London Midland will not be running a train service between Hemel Hempstead and London Euston for the entire day.

Tuesday

- A normal train service will resume on Tuesday morning. However, please check nationalrail.co.uk before you travel for any last minute changes.

🚆 London Overground will run between Watford Junction and London Euston all weekend as normal.

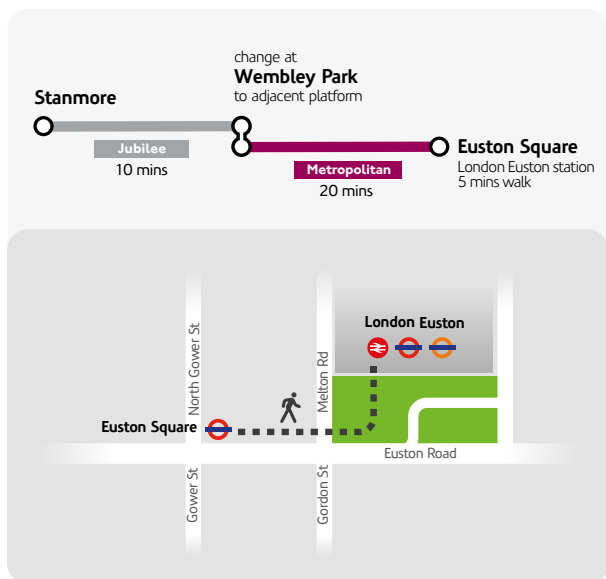
🚇 London Underground services from Watford (Metropolitan line) will run all weekend as normal.

On Saturday, Sunday and Bank Holiday Monday, you will not be able to use Chesham or Amersham stations, as Transport for London will be carrying out improvement works. Replacement buses will operate between Chesham and Northwood. Travel from Watford Underground Station will not be affected.



changing lines

London Midland will be running alternative road transport to Stanmore during the closures. If you need to travel between Stanmore and Euston, you should change at Wembley Park. You cannot enter or exit Wembley Park station.



first and last buses

If you need to travel outside the times stated below, please plan your journey at nationalrail.co.uk

Saturdays

FROM	FIRST BUS	LAST BUS
Stanmore	0638 going north	2338 going north
Watford Junction	0509 going north 0549 going south	0255 (Sun AM) going north 0043 (Sun AM) going south
Hemel Hempstead	0516 going south	0017 (Sun AM) going south

Sundays

FROM	FIRST BUS	LAST BUS
Stanmore (Sun 10 and Sun 17)	0737 going north	2355 going north
Watford Junction (Sun 10 and Sun 17)	0643 going north 0801 going south	0122 (Mon AM) going north 0001 (Mon AM) going south
Hemel Hempstead (Sun 10 and Sun 17)	0728 going south	2338 going south
Milton Keynes (Sun 24 only)	0435 going south	2319 going south

Monday 11 August & Monday 18 August

Before 0630, alternative road transport will run between Hemel Hempstead and Euston. Following this, there will be a significantly reduced train timetable in operation.

Bank Holiday Monday 25 August

FROM	FIRST BUS	LAST BUS
Stanmore	0607 going north	2337 going north
Watford Junction	0524 going north 0529 going south	0008 (Tue AM) going north 2350 going south
Hemel Hempstead	0516 going south	2317 going south

travelling by alternative road transport

If you choose to travel using London Midland's alternative road transport, your journey will be much longer, so adjust your journey time accordingly.

Below shows roughly how long it will take to travel to central London during the closure, including changes and transfer time - note that this is only a guide. Please leave as much time as possible to reach your destination.

Hemel Hempstead	2h
Watford Junction (via St Albans or Stanmore)	1h 30m
Milton Keynes (Sun 24 Aug only)	2h 30m

check before you travel

Remember to check nationalrail.co.uk/watford before you travel for any last minute changes.



If you will require wheelchair assistance, please ensure that you book this before travelling by calling our assisted travel team on 0800 092 4260. This is important so that we can ensure that we have suitable transport ready for your departure.



In order to allow space and comfort for passengers, bikes are not permitted on alternative road transport.



Some vehicles may have less space than the train; please limit your luggage to what you can carry comfortably.

getting information

check out
nationalrail.co.uk/watford
londonmidland.com/watford

or download our free app
londonmidland.com/app

call our customer relations team
0121 634 2040

follow us on Twitter @LondonMidland
& keep an eye on #WatfordUpgrade

Virgin Trains & Southern Trains will also be affected during the closures.

for more information

visit virgintrains.com
call **03331 031 031**

visit southernrailway.com
call **03451 27 29 20**

For more information on improvement works and rail services right across the UK.

visit nationalrail.co.uk
call **08457 48 49 50**

tell us what you think

If you travel with us during the closures, it would be great if you could spare a couple of minutes to tell us about your experience. Complete our quick survey to be in with a chance of winning one of ten pairs of London Midland travel tickets!

Simply visit
tinyurl.com/watfordsurvey



notes

check times & fares

national rail enquiries

08457 48 49 50

nationalrail.co.uk

contact us

0344 811 0133

0121 634 2040 from a mobile

comments@londonmidland.com

follow us on twitter

@londonmidland

for help, advice and travel updates

download our new free app

available now for iPhone and Android devices

londonmidland.com/app